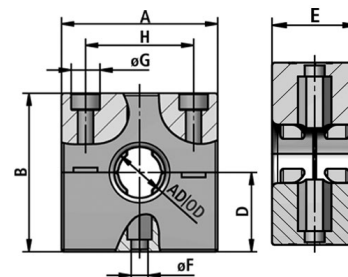




RQM2

**Tube clamp systems for light, medium and heavy duty applications, EN 45545-2 (HL3)**

Heavy Tube clamp for heavy duty applications, with fastening bore hole, ribbed fixing for strain relief, assembly of varying sizes in line feasible or on top of each other, applicable in combination with C-profile bars, EN 45545-2 (HL3)



**Temperature:** -40°C ... +120°C

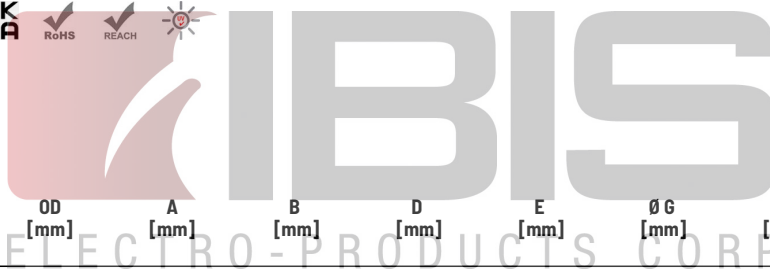
**Material:** PA plastics

**CHARACTERISTICS:**

- Properties: fastening bore hole
- ribbed fixing for strain relief
- assembly of varying sizes joined in line or on top of each other
- for using in combination with C-profile bar

**APPLICATIONS:**

- Application: for heavy duty applications / machine and plant constructions / insulated electrical installations for application rules machine and plant constructions acc. to DIN EN 60204 / Railway Industrie



FLEXA No.	Colour	OD [mm]	A [mm]	B [mm]	D [mm]	E [mm]	ø G [mm]	H [mm]	Weight [kg/100]	PU [pcs.]
15020008201	Black	2 x 42,5	126,0	66,0	33,0	30,0	8,5	106,0	10,900	10
15020008206	Black	2 x 54,5	151,0	66,0	33,0	30,0	8,5	132,0	12,000	5

Recommendations for any areas of applications, products, or product combinations are issued to the best of FLEXA's knowledge and experience. The user is requested to check applicability of FLEXA products to specific applications and purposes prior to the use of the particular products. All documentation, illustrations, and charts published are subject to copyright and must not be copied, changed, used, or modified. Technical drawings, certificates, authorizations, and results by the FLEXA lab will be provided upon request. FLEXA will not be held liable for typographical or other errors and incorrect drawings. Technical modifications are subject to change without prior notice.